

Archaeological monitoring and recording at Little Waltham Primary School, The Street, Little, Waltham, Essex, CM3 3NY

January 2017



by **Laura Pooley**

figures by Ben Holloway and Emma Holloway

fieldwork by Ben Holloway

commissioned by Harry Brundle, Phlean Construction Ltd

NGR: TL 7091 1314 (centre)

Planning ref.: 15/01996/ECC3 or CC/CHL/71/15

CAT project ref.: 16/12h

ECC code: LWPRS16

Chelmsford Museum accession code CHMRE: 2016.142

OASIS ref.: colchest3-271617



Colchester Archaeological Trust

Roman Circus House,
Roman Circus Walk,
Colchester,
Essex, CO2 7GZ

tel.: 01206 501785

email: lp@catuk.org

CAT Report 1074
March 2017

Contents

1	Summary	1
2	Introduction	1
3	Archaeological background	1
4	Results	1
5	Finds	2
6	Discussion	3
7	Acknowledgements	3
8	References	3
9	Abbreviations and glossary	3
10	Contents of archive	3
11	Archive deposition	4
	Appendix 1 Context list	5
	Figures	after p5
	OASIS summary sheet	

List of photographs and figures

Cover: general site shot

Photograph 1	Excavation of footings, looking SE	2
Photograph 2	Excavation of footings, looking NE	2

Fig 1	Site location
Fig 2	Results
Fig 3	Representative sections

1 Summary

Archaeological monitoring and recording took place at Little Waltham Primary School, The Street, Little Waltham, Essex during groundworks for the construction of a new school extension. Despite being located on the main Chelmsford-Braintree-Long Melford Roman road, there were no significant archaeological remains.

2 Introduction (Fig 1)

This is the archive report for archaeological monitoring and recording at Little Waltham Primary School, The Street, Little Waltham, Essex which was carried out 19th-27th January 2017. The work was commissioned by Harry Brundle of Phelan Construction Ltd, during groundworks for the construction of a new school extension, and was undertaken by Colchester Archaeological Trust (CAT).

In response to consultation with Essex County Council Place Services (ECCPS), Historic Environment Advisor Alison Bennett advised that in order to establish the archaeological implications of this application, the applicant should be required to commission a scheme of archaeological investigation in accordance with the *National Planning Policy Framework* (DCLG 2012).

All archaeological work was carried out in accordance with a *Brief for Archaeological Monitoring*, detailing the required archaeological work, written by Alison Bennett (ECCPS 2016), and a Written Scheme of Investigation (WSI) prepared by CAT in response to the brief and agreed with ECCPS (CAT 2016).

In addition to the brief and WSI, all fieldwork and reporting was done in accordance with English Heritage's *Management of Research Projects in the Historic Environment (MoRPHE)* (English Heritage 2006), and with *Standards for field archaeology in the East of England* (EAA 14 and 24). This report mirrors standards and practices contained in the Institute for Archaeologists' *Standard and guidance for archaeological watching briefs* (ClfA 2014a) and *Standard and guidance for the collection, documentation, conservation and research of archaeological materials* (ClfA 2014b).

3 Archaeological background

The following archaeological background draws on the Essex Historic Environment Record (EHER) held at Essex County Council, County Hall, Chelmsford, Essex.

The EHER shows that the development site lies in an area of archaeological potential. To the east of the school are the cropmarks of two possible prehistoric ring ditches (EHER 6131). To the west of the school in an area monitored in advance of the construction of Little Waltham bypass multi-period remains were encountered included various Roman finds (EHER 6067). The Chelmsford-Braintree-Long Melford Roman road (EHER 6057) also runs along The Street on the western edge of the school.

4 Results (Figs 2-3)

All groundworks were completed by the contractor under archaeological supervision. Initially 0.35-0.4m of made ground and sub-base (associated with a modern block pavement) were removed from the site. Following this reduction, approximately 85m linear of footings were excavated measuring 0.6m wide by 0.6-1.5m deep. The footings were excavated through a remnant of modern topsoil (L1, c 0.1-0.17m thick, containing modern brick and glass (not retained)) onto a medium grey/brown silty-clay subsoil (L2, c 300-380m deep) which sealed natural clay (L3). There were several areas of disturbance resulting from modern service trenches, but there were no significant archaeological remains.



Photograph 1 Excavation of footings, looking SE



Photograph 2 Excavation of footings, looking NE

5 Finds

There were no archaeological finds.

6 Discussion

Despite being located on the route of the main Chelmsford-Braintree-Long Melford Roman road, there were no significant archaeological remains.

7 Acknowledgements

CAT thanks Harry Brundle and Phelan Construction Ltd for commissioning and funding the work. The project was managed by C Lister, fieldwork was carried out by B Holloway. Figures are by BH and E Holloway. The project was monitored for ECCPS by Alison Bennett.

8 References

Note: all CAT reports, except for DBAs, are available online in .pdf format at <http://cat.essex.ac.uk>

CAT	2014	<i>Health and Safety Policy</i>
CAT	2015	<i>Written Scheme of Investigation (WSI) for archaeological monitoring at Little Waltham Primary School, The Street, Little Waltham, Essex, CM3 3NY</i>
ClfA	2014a	<i>Standard and guidance for archaeological watching briefs</i>
ClfA	2014b	<i>Standard and guidance for the collection, documentation, conservation and research of archaeological materials</i>
DCLG	2012	<i>National Planning Policy Framework</i> . Dept of Communities and Local Government.
EAA 14	2003	<i>Standards for field archaeology in the East of England</i> , East Anglian Archaeology, Occasional Papers, 14 . Ed. D Gurney
EAA 24	2011	<i>Research and archaeology revisited: A revised framework for the East of England</i> , East Anglian Archaeology Occasional Papers 24 , by Maria Medlycott
ECCPS	2015	<i>Brief for Archaeological Monitoring at Little Waltham Primary School, The Street, Little Waltham</i>
English Heritage	2006	<i>Management of Research Projects in the Historic Environment</i> (English Heritage)

9 Abbreviations and glossary

CAT	Colchester Archaeological Trust
ClfA	Chartered Institute for Archaeologists
context	specific location of finds on an archaeological site
ECCPS	Essex County Council Place Services
EHHER	Essex Historic Environment Record
feature (F)	an identifiable thing like a pit, a wall, a drain: can contain 'contexts'
layer (L)	distinct or distinguishable deposit (layer) of material
medieval	period from AD 1066 to c 1500
modern	period from c AD 1800 to the present
natural	geological deposit undisturbed by human activity
NGR	National Grid Reference
post-medieval	from c AD 1500 to c 1800
residual	something out of its original context, eg a Roman coin in a modern pit
Roman	the period from AD 43 to c AD 410
section	(abbreviation sx or Sx) vertical slice through feature/s or layer/s
ws	written scheme of investigation

10 Contents of archive

Finds: n/a

Paper and digital record

One A4 document wallet containing:

The report (CAT Report 1074)

ECC evaluation brief, CAT written scheme of investigation
Original site record (feature and layer sheets, finds record, plans)
Site digital photos and log, architectural plans, attendance register, risk assessment

11 Archive deposition

The paper and digital archive is currently held by the Colchester Archaeological Trust at Roman Circus House, Roman Circus Walk, Colchester, Essex CO2 7GZ, but will be permanently deposited with Chelmsford Museum under accession code CHMRE: 2016.142.

© Colchester Archaeological Trust 2017

Distribution list:

Harry Brundle, Phelan Construction Ltd
ECC Place Services Historic Environment Advisor
Essex Historic Environment Record, Essex County Council



Colchester Archaeological Trust

Roman Circus House,
Roman Circus Walk,
Colchester,
Essex, CO2 7GZ

tel.: 01206 501785

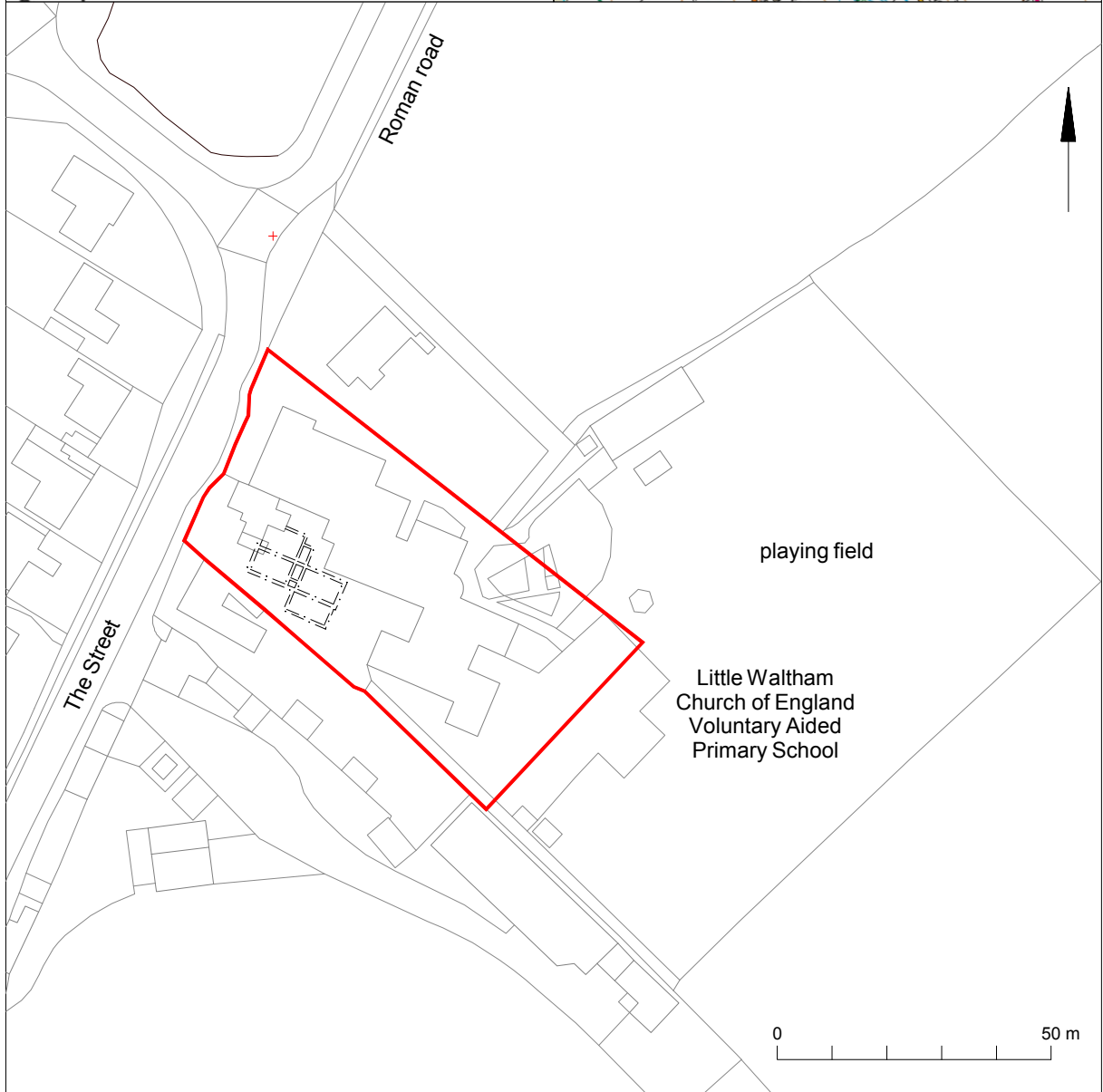
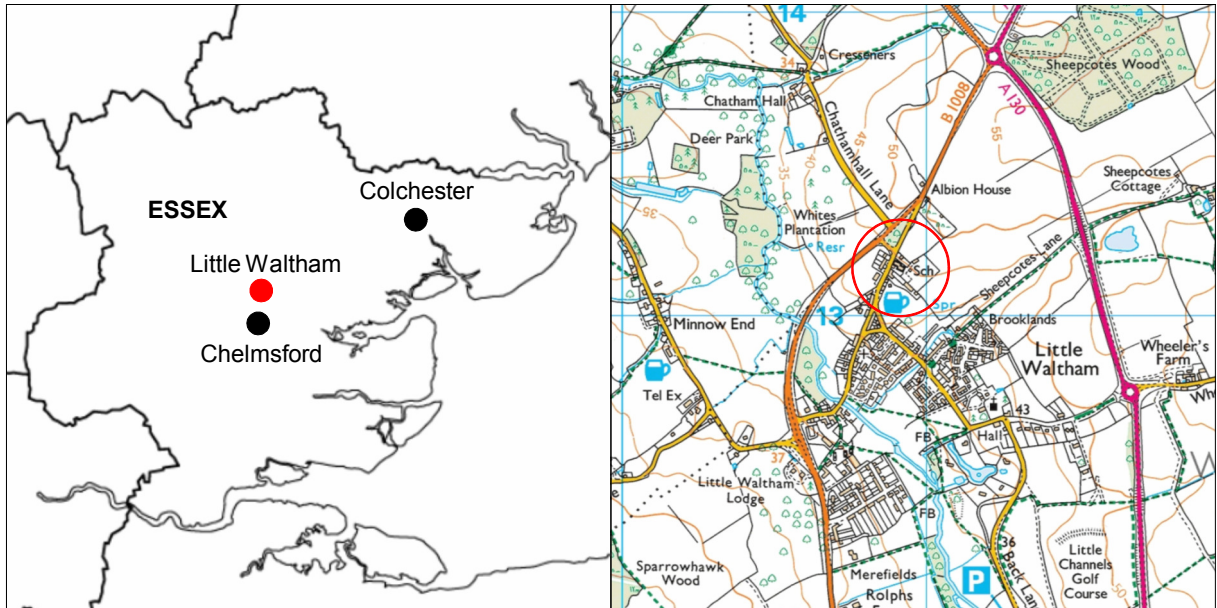
email: lp@catuk.org

Checked by: Philip Crummy

Date: 2.2.2017

Appendix 1 Context list

Context number	Context type	Description	Date
L1	Topsoil	Firm, moist, dark grey/brown silty-clay with modern brick, glass and coal (not retained)	Modern
L2	Subsoil	Firm, moist, medium grey/brown silty-clay	-
L3	Natural	Firm, moist, medium yellow/grey clay	-



© Crown copyright. All rights reserved. Licence number 100039294.

Fig 1 Site location



Fig 2 Results

© Crown copyright. All rights reserved. Licence number 100039294.



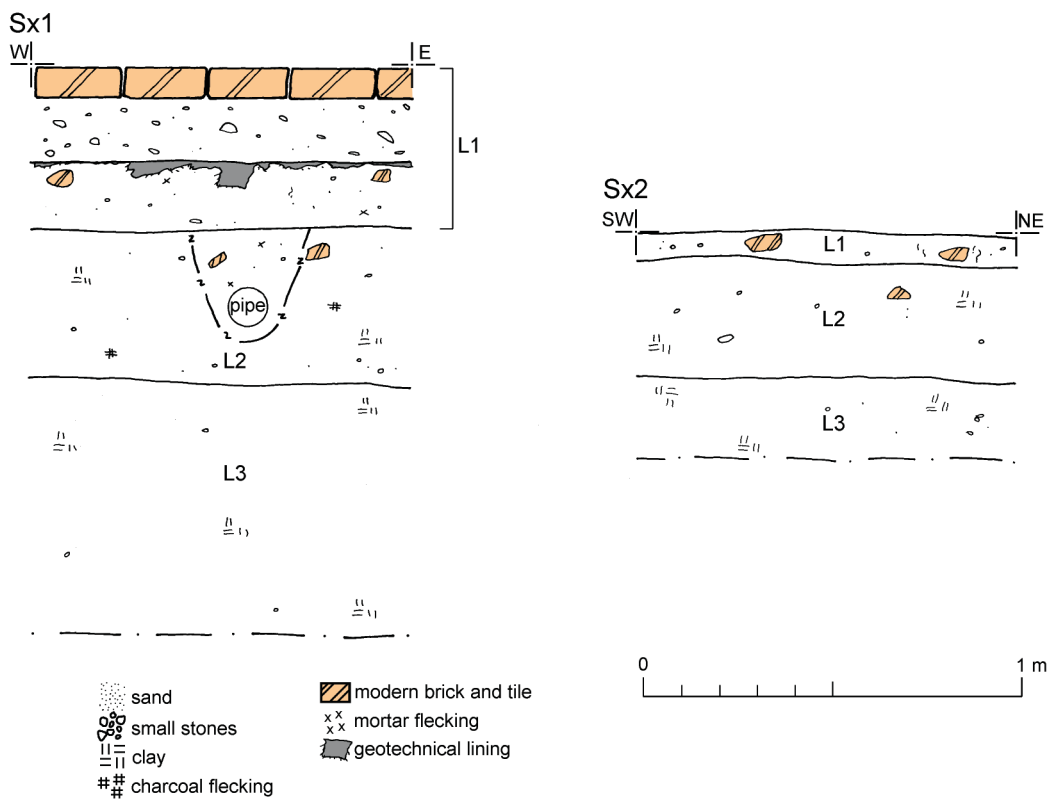


Fig 3 Representative sections.

OASIS DATA COLLECTION FORM: England

[List of Projects](#) | [Manage Projects](#) | [Search Projects](#) | [New project](#) | [Change your details](#) | [HER coverage](#) | [Change country](#) | [Log out](#)

Printable version

OASIS ID: colchest3-271617

Project details

Project name	Archaeological monitoring and recording at Little Waltham Primary School, The Street, Little Waltham, Essex, CM3 3NY
Short description of the project	Archaeological monitoring and recording took place at Little Waltham Primary School, The Street, Little Waltham, Essex during groundworks for the construction of a new school extension. Despite being located on the main Chelmsford-Braintree-Long Melford Roman road, there were no significant archaeological remains.
Project dates	Start: 19-01-2017 End: 27-01-2017
Previous/future work	No / Not known
Any associated project reference codes	16/12h - Contracting Unit No.
Any associated project reference codes	LWPRS16 - HER event no.
Any associated project reference codes	CC/CHL/71/15 - Planning Application No.
Any associated project reference codes	CHMRE: 2016.142 - Museum accession ID
Type of project	Recording project
Site status	None
Current Land use	Community Service 1 - Community Buildings
Monument type	N/A None
Significant Finds	N/A None
Investigation type	""Watching Brief""
Prompt	Planning condition

Project location

Country	England
Site location	ESSEX CHELMSFORD LITTLE WALTHAM Little Waltham Primary School, The Street
Postcode	CM3 3NY
Study area	0.31 Hectares
Site coordinates	TL 7091 1314 51.790271987909 0.478424341237 51 47 24 N 000 28 42 E Point

Project creators

Name of Organisation	Colchester Archaeological Trust
Project brief originator	CBC Archaeological Officer
Project design originator	Laura Pooley
Project director/manager	Chris Lister
Project supervisor	Ben Holloway
Type of sponsor/funding body	Developer

Project archives

Physical Archive Exists?	No
Digital Archive recipient	Chelmsford Museum
Digital Archive ID	CHMRE: 2016.142
Digital Contents	"none"
Digital Media available	"Images raster / digital photography"
Paper Archive recipient	Chelmsford Museum
Paper Archive ID	CHMRE: 2016.142
Paper Contents	"none"
Paper Media available	"Context sheet", "Miscellaneous Material", "Photograph", "Plan", "Report", "Section"

Project bibliography 1

Publication type	Grey literature (unpublished document/manuscript)
Title	Archaeological monitoring and recording at Little Waltham Primary School, The Street, Little Waltham, Essex, CM3 3NY: January 2017
Author(s)/Editor(s)	Pooley, L.
Other bibliographic details	CAT Report 1074
Date	2017
Issuer or publisher	Colchester Archaeological Trust
Place of issue or publication	Colchester
Description	A4 ringbound loose leaf
URL	http://cat.essex.ac.uk/all-reports.html
Entered by	Laura Pooley (lp@catuk.org)
Entered on	27 February 2017

OASIS:

Please e-mail [Historic England](#) for OASIS help and advice

© ADS 1996-2012 Created by [Jo Gilham and Jen Mitcham](#), email Last modified Wednesday 9 May 2012

Cite only: <http://www.oasis.ac.uk/form/print.cfm?id=277591> for this page