

Archaeological monitoring and recording at Colchester Castle Park (UK Power Network), Colchester, Essex, CO1 1TJ

March 2017



by Laura Pooley

with contributions by Stephen Benfield

figures by Emma Holloway, Laura Pooley and Alec Wade

fieldwork by Alec Wade

**commissioned by Ian Baalham
on behalf of Colchester Borough Council**

NGR: TL 99921 25565 (centre)

Planning reference: n/a

CAT project ref.: 17/03I

CHER ref: ECC3974

Colchester Museum accession code COLEM: 2017.44

OASIS reference: colchest3-280661



Colchester Archaeological Trust

Roman Circus House,
Roman Circus Walk,
Colchester,
Essex, CO2 7GZ

tel.: 01206 501785

email: lp@catuk.org

CAT Report 1086

June 2017

Contents

1	Summary	1
2	Introduction	1
3	Archaeological background	1
4	Results	1
5	Finds	2
6	Discussion	3
7	Acknowledgements	3
8	References	3
9	Abbreviations and glossary	4
10	Contents of archive	4
11	Archive deposition	4

Appendix 1	Context list	6
------------	--------------	---

Figures	after p6
---------	----------

EHER summary sheet

OASIS summary

List of photographs, tables and figures

Cover: general site shot

Photograph 1	Layer L4, looking SE	2
--------------	----------------------	---

Table 1	All finds by context	2
---------	----------------------	---

Fig 1 Site location

Fig 2 Results

Fig 3 Representative sections

1 Summary

Archaeological monitoring and recording was carried out in Lower Castle Park to the north-north-east of Colchester Castle (a Scheduled Monument, NHLE no. 1002217) during emergency works to a high voltage power supply. The site is in an area of the highest archaeological importance, located close to the Norman Castle and the Roman Temple of Claudius. Modern, post-medieval and medieval layers were recorded to a depth of 0.45-0.7m below current ground level. The whole area had been badly disturbed by modern electrical cabinets and cables.

2 Introduction (Fig 1)

This report presents the results of archaeological monitoring and recording at Lower Castle Park, Colchester, Essex which was carried out 27th-28th March 2017. The work was commissioned by Ian Baalham on behalf of Colchester Borough Council during emergency groundworks to a high voltage power supply. The archaeological work was undertaken by Colchester Archaeological Trust (CAT).

In response to consultation with Jess Tipper, Colchester Borough Council Archaeological Advisor and Debbie Priddy, Inspector of Ancient Monuments for Historic England it was advised that the emergency works could go ahead under the supervision of a CAT archaeologist.

All fieldwork and reporting was done in accordance with English Heritage's *Management of Research Projects in the Historic Environment (MoRPHE)* (English Heritage 2006), and with *Standards for field archaeology in the East of England (EAA 14 and 24)*. This report mirrors standards and practices contained in the Institute for Archaeologists' *Standard and guidance for archaeological watching brief (ClfA 2014a)* and *Standard and guidance for the collection, documentation, conservation and research of archaeological materials (ClfA 2014b)*.

3 Archaeological background

The following archaeological background draws on the major published sources for Colchester archaeology (listed below), and also on the Colchester Historic Environment Record (CHER) (formerly UAD, Urban Archaeological Database).

The monitoring site is located in Lower Castle Park to the north of Colchester Castle Museum and in an area of outstanding archaeological importance. It is located just to the north of the Roman town walls/precinct of the Temple of Claudius, and within the grounds of the Norman Castle¹. The archaeological background of the site has been well published (see, for example, Hull 1958, Crummy 1997).

4 Results (Fig 2)

An area measuring approximately 6m by 4.2m was partially stripped by the contractors under the supervision of a CAT archaeologist, to allow for emergency works to be carried out. The area was stripped to a depth of between 0.45-0.55m and included a lot of modern disturbance from the existing electrical cabinets and service cables.

Approximately 0.18-0.22m of modern topsoil (L1) was initially removed. At the eastern end of the trench this revealed a layer of post-medieval sandy-silty clay (L2, up to 0.38m thick) which sealed a medieval layer of sandy-silty clay (L3).

At the western end of the trench a thin band of sand (L5, c 0.04m thick) sealed L2 (c 0.04-0.17m thick). Beneath L2 were two layers of demolition debris (L4, c 0.10m thick, which sealed L6, c 0.1-0.2m thick). Clay/scorched clay layer L7 (<0.2m thick) possibly

¹ The site is a Scheduled Monument (EX 1, HA 1002217).

lay between L4 and L6 but this could not be confirmed. Medieval sandy-silty clay (L3) was sealed by L6.



Photograph 1 Layer L4, looking SE

5 Finds

by Stephen Benfield

Small quantities of finds were recovered from several layers (L1-L4 and L6). The finds range in date from modern to Roman. They consist of pottery, ceramic building material (CBM) and animal bone together with a few metal finds one of which has been given an individual small find number (SF1). The finds are listed and described by context in Table 1. Finds are dated individually or as a group of the same finds type and a finds spot date is given for the context. Medieval and post-medieval pottery fabrics refer to CAR 7 and Roman pottery fabrics to CAR 10. Roman pottery vessel form types refer to the Colchester, *Camulodunum* (Cam) type series (Hawkes & Hull 1947 & Hull 1958).

Context & finds no.	Type/ description	Finds Spot date
L1, 1	Post-medieval pottery: (1 sherd, 12g) Fabric 40B, base sherd, probably from a bowl-like pot (c L16/17-18/E19C). Roman CBM: piece from an <i>imbrex</i> tile. Animal bone: (1 piece) medium-large mammal bone. Modern coin: Edward VII penny (coin dated 1907)	Modern (early 20C – after 1907)
L2, 2	Post-medieval pottery: (1 sherd, 8g) Fabric 40B, base sherd, probably from a bowl-like pot (c L16/17-18/E19C). Roman CBM: (1) piece from a <i>tegula</i> flange with lower cut away (LCA), Warry 2006 Type C5 (possibly 2nd-3rd century following Warry's dating scheme); piece probably from an <i>imbrex</i> , thick, grey fabric, abraded	Post-medieval (L16/17-18/E19)
L3, 3	Roman pottery (8 sherds, 88g) Fabric DJ (2 sherds) (c M1-2C), Fabric GX (6 sherds) misc sherds from several pots, some abraded, one jar/bowl rim suggest 2-3C date (Rom 2C+).	Medieval (c 13/14C-15C)

Context & finds no.	Type/ description	Finds Spot date
	<p>Medieval pottery: (1 sherd, 4g) probably medieval, Fabric 20 (c L12/13-14C).</p> <p>Roman CBM: (8 pieces) Roman brick (2) brick edge and piece from a thicker, reused brick; Flue tile (1) combed face; misc brick/tile (3) small pieces; <i>Tesserae</i> (2) floor cubes (no indication of mortar from setting into a floor).</p> <p>Post-Roman CBM: (1 piece, 16g) small piece of peg-tile (probably L13/14C+).</p> <p>Iron: SF1 Iron brooch? Fragment, corroded piece of wire (65mm long) with expanded areas of corrosion at end (one rounded, one flat), shape and appearance suggests a spring from a brooch with catch plate, probably Roman. Also head and part of shaft of a nail (round, flat head) (if Roman corresponds to Manning Type 1b)</p>	
L4, 4	<p>Roman pottery (2 sherds, 10g) Fabric GX rim from a bowl, reeded flat rim, form Cam 243-244/246 (M/L1-E2C), one other greyware sherd (Rom).</p> <p>Roman CBM: (5 pieces) <i>tegula</i> with flange and part of LCA, Warry 2006, Type C or D – possibly 2nd-3rd century following Warry's dating scheme), tile base thickness 22mm; broken pieces of Roman brick/tile reused.</p> <p>Animal bone: (1 piece) medium-large mammal bone.</p>	Roman (mid Rom?)
L6, 5	<p>Roman pottery (1 sherd, 34g) Fabric EE (Marbled ware) rim (wall profile) from a dish, corresponds to form Dr 18/31, or small Dr 31 bowl, fine, pale orange-buff fabric with colour-coated light orange surface mottled over with darker orange-red.</p>	Roman (2C)

Table 1 All finds by context

6 Discussion

Archaeological monitoring at Colchester Castle Park revealed layers dating to the modern, post-medieval and medieval periods, recorded to a depth of 0.45-0.7m below current ground level. Two patches of demolition material were recorded at the western-end of the trench and despite containing Roman material, they sealed medieval layer L3. The whole area had been badly disturbed by modern electrical cabinets and cables.

7 Acknowledgements

CAT thanks Ian Baalham and Colchester Borough Council for commissioning and funding the work. The project was managed by C Lister and carried out by A Wade. Figures were prepared by B Holloway, E Holloway and A Wade. The project was monitored for CBCPS by Jess Tipper.

8 References

Note: all CAT reports, except for DBAs, are available online in PDF format at <http://cat.essex.ac.uk>

CAR 7	2000	<i>Colchester Archaeological Report 7: Post-Roman pottery from excavations in Colchester 1971-85</i> , by J Cotter
CAR 10	2000	<i>Colchester Archaeological Report 10: Roman pottery from excavations in Colchester, 1971-86</i> , by R Symonds and S Wade
CAT	2014	<i>Health & Safety Policy</i>
ClfA	2014a	<i>Standard and Guidance for an archaeological watching brief</i>
ClfA	2014b	<i>Standard and guidance for the collection, documentation, conservation and research of archaeological materials</i>
Crummy, P	1997	<i>City of Victory: the story of Colchester – Britain's first Roman town</i>
Gurney, D	2003	<i>Standards for field archaeology in the East of England</i> . East Anglian Archaeology Occasional Papers 14 (EAA 14).
DCLG	2012	<i>National Planning Policy Framework</i>

English Heritage	2006	<i>Management of Research Projects in the Historic Environment (MoRPHE)</i>
Hawkes, C & Hull, R	1947	<i>Camulodunum, first report on the excavations at Colchester 1930-39, RRCSAL 14</i>
Hull, M.R.	1958	<i>Roman Colchester RRCSAL 20</i>
Medlycott, M	2011	<i>Research and archaeology revisited: A revised framework for the East of England. East Anglian Archaeology Occasional Papers 24 (EAA 24)</i>

9 Abbreviations and glossary

CAT	Colchester Archaeological Trust
CBCPS	Colchester Borough Council Planning Services
CHER	Colchester Historic Environment Record (previously UAD)
ClfA	Chartered Institute for Archaeologists
context	specific location of finds on an archaeological site
feature (F)	an identifiable thing like a pit, a wall, a drain: can contain 'contexts'
layer (L)	distinct or distinguishable deposit (layer) of material
medieval	period from AD 1066 to c 1500
modern	period from c AD 1800 to the present
natural	geological deposit undisturbed by human activity
post-medieval	from c AD 1500 to c AD 1800
Roman	the period from AD 43 to c AD 410
UAD	Urban Archaeological Database (now CHER)
wsi	written scheme of investigation

10 Contents of archive

Finds: none retained

Paper and digital record

One A4 document wallet containing:

The report (CAT Report 1086)

CBC evaluation brief, CAT written scheme of investigation

Original site record (feature and layer sheets, finds record, plans)

Site digital photos and log, architectural plans, attendance register, risk assessment

11 Archive deposition

The paper and digital archive is currently held by the Colchester Archaeological Trust at Roman Circus House, Roman Circus Walk, Colchester, Essex, CO2 7GZ, but will be permanently deposited with Colchester Museum under accession code: COLEM 2017.44.

Distribution list

Ian Baalham, Colchester Borough Council
Jess Tipper, Colchester Borough Council Planning Services
Debbie Priddy, Historic England
Essex Historic Environment Record



Colchester Archaeological Trust

Roman Circus House,
Roman Circus Walk,
Colchester,
Essex, CO2 7GZ

tel.: 01206 501785

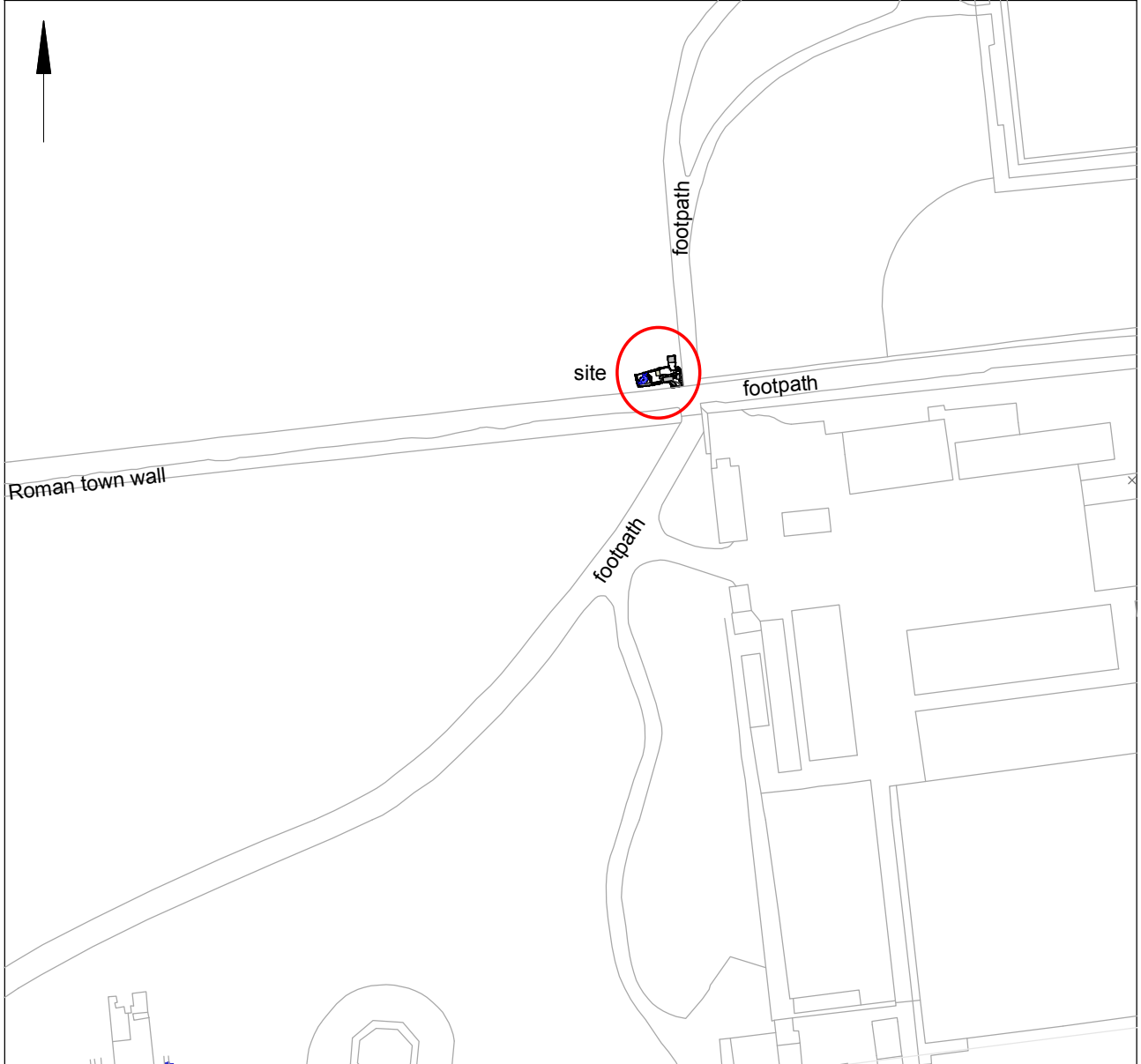
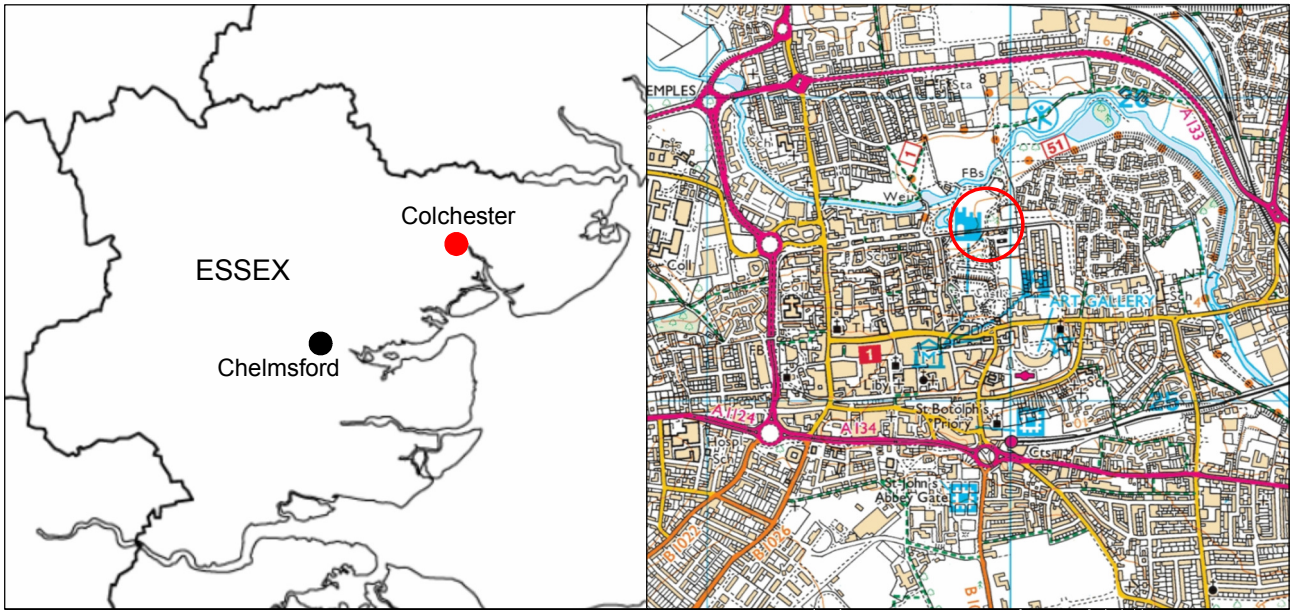
email: lp@catuk.org

Checked by: Philip Crummy

Date: 7.6.2017

Appendix 1 Context list

Context no.	Finds no.	Context type	Description	Date
L1	1	Topsoil	Soft, friable, moist, very dark grey sandy-silty clay/loam, <2% gravel, <3% stone	Modern, after 1907
L2	2	Buried topsoil	Soft, friable, moist, very dark grey sandy-silty clay, occasional CBM flecks, 2% stone	Post-medieval, late 16th/17th-18th/early 19th century
L3	3	-	Moist, mottled light brown/medium-dark grey/brown sandy-silty clay, 5% stone	Medieval, c 13th /14th-15th century
L4	4	Demolition debris	Friable, moist, medium-dark grey/brown sandy-silty clay with occasional flecks of Roman CBM and 30% mortar, <5% stone	Medieval/post-medieval (after L3, before L2)
L5	-	Sand	Thin band of dark orange sand beneath L1	Modern
L6	5	Demolition debris	Moist, dark loam with occasional CBM flecks, 10% stone	Medieval/post-medieval (after L3, before L2)
L7	-	Clay/ scorched clay	Firm, dry, medium brown sandy-silty clay, 2% stone	Medieval/post-medieval (after L3, before L2)



© Crown copyright. All rights reserved. Licence number 100039294.

Fig 1 Site location.



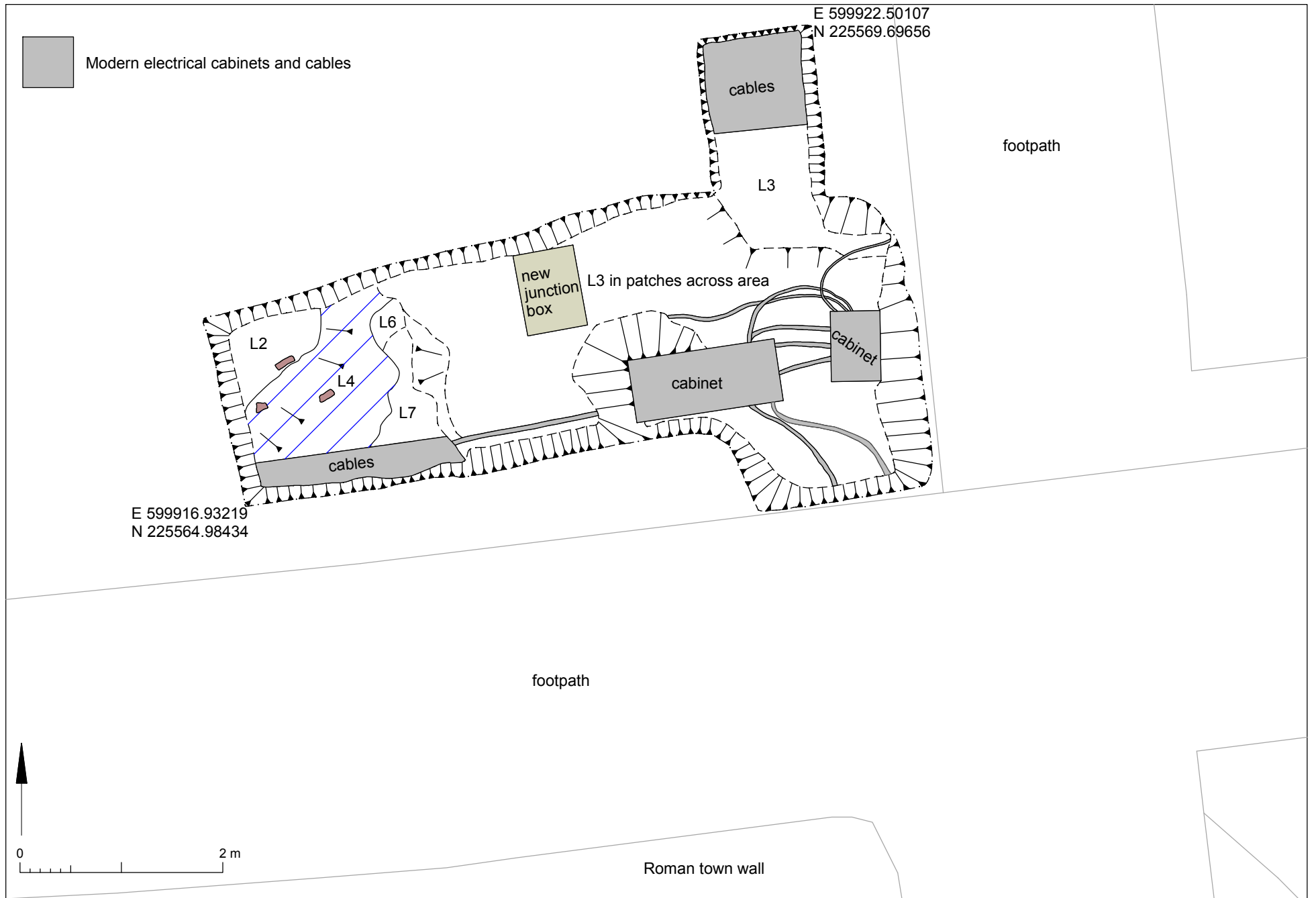


Fig 2 Results

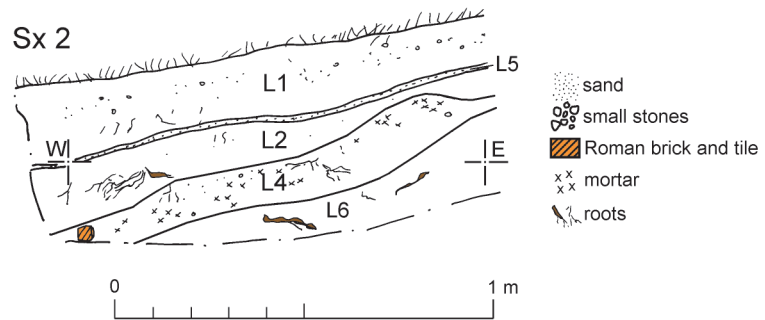
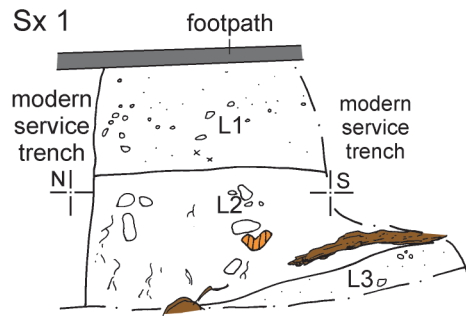


Fig 3 Representative sections.

Essex Historic Environment Record/ Essex Archaeology and History

Summary sheet

Address: Lower Castle Park, Colchester, Essex, CO1 1TJ	
Parish: Colchester	District: Colchester
NGR: TL 99921 25565 (centre)	Site code: CAT project ref.: 17/03l CHER ref: ECC3974 OASIS ref: colchest3-280661
Type of work: Monitoring and recording	Site director/group: Colchester Archaeological Trust
Date of work: 27th-28th March 2017	Size of area investigated: 19m ²
Location of curating museum: Colchester museum accession code COLEM: 2017.44	Funding source: Colchester Borough Council
Further seasons anticipated? no	Related SM number: SM 1002217
Final report: CAT Report 1086	
Periods represented: modern, post-medieval, medieval	
Summary of fieldwork results: Archaeological monitoring and recording was carried out in Lower Castle Park to the north-north-east of Colchester Castle (a Scheduled Monument, NHLE no. 1002217) during emergency works to a high voltage power supply. The site is in an area of the highest archaeological importance, located close to the Norman Castle and the Roman Temple of Claudius. Modern, post-medieval and medieval layers were recorded to a depth of 0.45-0.7m below current ground level. The whole area had been badly disturbed by modern electrical cabinets and cables.	
Previous summaries/reports: –	
CBC monitor: Jess Tipper	
Keywords: –	Significance: –
Author of summary: Laura Pooley	Date of summary: June 2017

OASIS DATA COLLECTION FORM: England

[List of Projects](#) | [Manage Projects](#) | [Search Projects](#) | [New project](#) | [Change your details](#) | [HER coverage](#) | [Change country](#) | [Log out](#)

[Printable version](#)

OASIS ID: colchest3-280661

Project details

Project name	Archaeological monitoring and recording at Colchester Castle Park (UKPN works), Colchester, Essex, CO1 1TJ
Short description of the project	Archaeological monitoring and recording was carried out in Lower Castle Park to the north-north-east of Colchester Castle (a Scheduled Monument, NHLE no. 1002217) during emergency works to a high voltage power supply. The site is in an area of the highest archaeological importance, located close to the Norman Castle and the Roman Temple of Claudius. Modern, post-medieval and medieval layers were recorded to a depth of 0.45-0.7m below current ground level. The whole area had been badly disturbed by modern electrical cabinets and cables.
Project dates	Start: 27-03-2017 End: 28-03-2017
Previous/future work	Yes / Not known
Any associated project reference codes	17/03I - Contracting Unit No.
Any associated project reference codes	ECC3974 - HER event no.
Any associated project reference codes	COLEM: 2017.44 - Museum accession ID
Type of project	Recording project
Site status	Scheduled Monument (SM)
Current Land use	Other 8 - Land dedicated to the display of a monument
Monument type	N/A None
Significant Finds	POTTERY Roman
Significant Finds	POTTERY Medieval
Significant Finds	POTTERY Post Medieval
Significant Finds	CERAMIC BUILDING MATERIAL Roman
Significant Finds	CERAMIC BUILDING MATERIAL Post Medieval
Significant Finds	IRON BROOCH FRAGMENT Roman
Investigation type	"Watching Brief"
Prompt	Scheduled Monument Consent

Project location

Country	England
Site location	ESSEX COLCHESTER COLCHESTER Castle Park (UKPN)
Postcode	CO1 1TJ
Study area	19 Square metres
Site coordinates	TL 99921 25565 51.892199370983 0.90576414412 51 53 31 N 000 54 20 E Point

Project creators

Name of Organisation	Colchester Archaeological Trust
Project brief originator	none
Project design originator	none
Project director/manager	Chris Lister
Project supervisor	Alec Wade
Type of sponsor/funding body	Borough Council

Project archives

Physical Archive Exists?	No
Digital Archive recipient	Colchester Museum
Digital Archive ID	COLEM: 2017.44
Digital Contents	"Stratigraphic", "Survey"
Digital Media available	"Images raster / digital photography"

Paper Archive recipient Colchester Museum
Paper Archive ID COLEM: 2017.44
Paper Contents "Stratigraphic", "Survey"
Paper Media available "Context sheet", "Miscellaneous Material", "Photograph", "Plan", "Report", "Section"

Project bibliography 1

Publication type Grey literature (unpublished document/manuscript)
Title Archaeological monitoring and recording at Colchester Castle Park (UK Power Network), Colchester, Essex, CO1 1TJ: March 2017
Author(s)/Editor(s) Pooley, L.
Other bibliographic details CAT Report 1086
Date 2017
Issuer or publisher Colchester Archaeological Trust
Place of issue or publication Colchester
Description A4 ringbound loose leaf
URL <http://cat.essex.ac.uk/all-reports.html>

Entered by Laura Pooley (lp@catuk.org)
Entered on 8 June 2017

OASIS: Please e-mail [Historic England](#) for OASIS help and advice
© ADS 1996-2012 Created by [Jo Gilham](#) and [Jen Mitcham](#), email Last modified Wednesday 9 May 2012
Cite only: <http://www.oasis.ac.uk/form/print.cfm?id=287031> for this page