

Colchester Archaeological Trust



CAT Report 1863
Issued November 2022

**Archaeological evaluation on land to the rear of
Debden Barns, Water Lane, Elder Street,
Wimbish, Essex, CB11 3JY: October 2022**



CAT project ref.: 2022/09f
ECC code: DBWIM22

**Archaeological evaluation on land to the rear of
Debden Barns, Water Lane, Elder Street,
Wimbish, Essex, CB11 3JY: October 2022**

NGR: TL 56440 34169

Planning ref.: UTT/20/0217/OP

**CAT project ref.: 2022/09f
CAT Report 1863**

**ECC code: DBWIM22
OASIS id: colchest3-509664**

**report prepared by
Dr Elliott Hicks**

**fieldwork by Harvey Furniss with Tabitha Lawrence
and Ziya Eksen**

commissioned by Robert Tetlow, Debden Barns

Prepared by:	Dr Elliott Hicks	Junior Project Officer
Reviewed by:	Laura Pooley	Post Excavation Manager
Reviewed and approved by:	Philip Crummy	Director of Archaeology
Issued:	11/11/2022	

Colchester Archaeological Trust

Roman Circus House,
Roman Circus Walk,
Colchester,
Essex CO2 7GZ

tel.: 01206 501785

email: eh2@catuk.org

web: www.thecolchesterarchaeologist.co.uk

Contents

1	Summary	1
2	Introduction	1
3	Archaeological background	1
4	Aims	2
5	Results	2
6	Finds	3
7	Conclusion	3
8	Acknowledgements	3
9	References	3
10	Abbreviations and glossary	4
11	Archive deposition	4

Figures after p4

OASIS summary sheet

List of photographs, maps and figures

Cover: working shot

Photograph 1 T2 trench shot, looking southwest 3

Map 1 Extract of the Chapman and André map (1777) 2

Map 2 Extract of the 1st edition 6-inch OS Map (1881) 2

Fig 1 Site location and trench layout in relation to proposed development

Fig 2 Results

Fig 3 Representative sections

1 Summary

An archaeological evaluation (three trial-trenches) was carried out on land to the rear of Debden Barns, Wimbish, Essex in advance of the construction of a new dwelling. The development site is located next to a property containing a possible moat which likely has its origins in the medieval period, and lies near a historic RAF airfield and in the midst of a number of Second World War era defensive structures. Despite lying in an archaeologically-sensitive area, however, no archaeological remains were encountered.

2 Introduction (Fig 1)

This is the report for an archaeological evaluation carried out by Colchester Archaeological Trust (CAT) on land to the rear of Debden Barns, Wimbish, Essex on 24th October 2022. The work was commissioned by Robert Tetlow of Debden Barns, and was carried out in advance of the construction of a new dwelling.

In response to consultation with Essex County Council Place Services (ECCPS), the Historic Environment Advisor advised that in order to establish the archaeological implications of this application the applicant should be required to commission a scheme of archaeological investigation in accordance with the *National Planning Policy Framework* (MHCLG 2021).

All archaeological work was carried out in accordance with an *Archaeological Brief for Trial Trenching and Excavation*, detailing the required archaeological work, written by Richard Havis (ECCPS 2022), and a written scheme of investigation (WSI) prepared by CAT in response to the brief and agreed with ECCPS (CAT 2022).

In addition to the brief and WSI, all fieldwork and reporting was done in accordance with *Management of Research Projects in the Historic Environment (MoRPHE)* (Historic England 2016), and with *Standards for field archaeology in the East of England* (EAA 14 and 24). This report mirrors standards and practices contained in the Institute for Archaeologists' *Standard and guidance for archaeological excavation* (ClfA 2014a), and *Standard and guidance for the collection, documentation, conservation and research of archaeological materials* (ClfA 2014b).

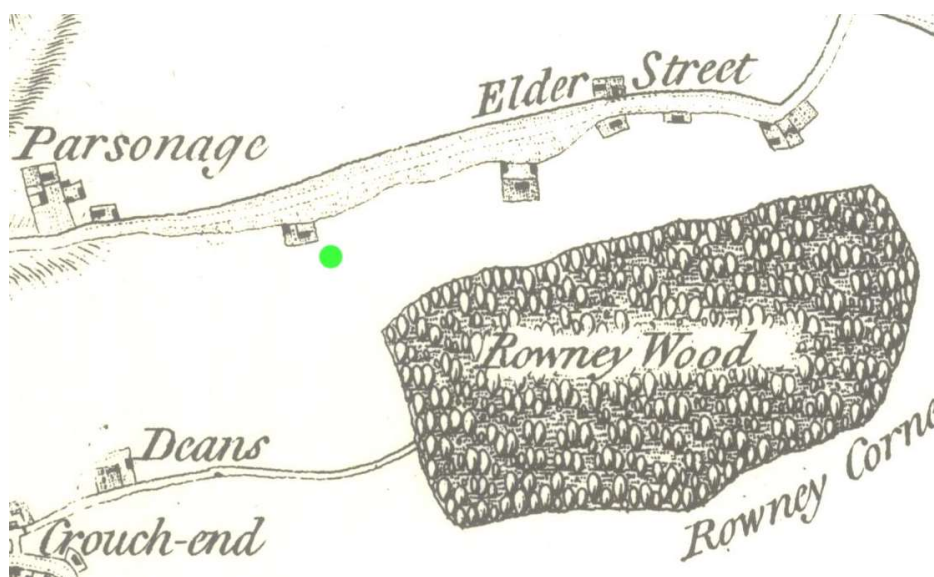
3 Archaeological background

The following archaeological background includes extracts of the ECC brief and the Essex Historic Environment Records (EHER) held at Essex County Council, County Hall, Chelmsford, Essex (accessed via <http://www.heritagegateway.org.uk>).

The development site is located adjacent to a site known as 'Ricketts', which is depicted on Chapman and André's 1777 map of Essex (Map 1). Ordnance Survey mapping of the area compiled in 1881 also indicates the presence of a possible moat on the site, indicating that medieval features may be present on the development site (Map 2).

Freemans Farm moated site lies approximately 500m to the east of the development site. It is an ancient scheduled monument (NHLE No. 1008708) which dates to the medieval period and is still visible and water-filled today.

Directly north of Debden Barns is the site of the former RAF Debden airfield (EHER 16539). It was constructed in 1935 as part of the RAF expansion scheme and is the only airfield built in Essex during this period. The airfield closed in 1975 but several of the buildings now form part of Carver barracks. Several Second World War era pill boxes are also located in the vicinity (EHER 21518, 21520-2).



Map 1 Extract of the Chapman and André map (1777). The approximate location of the site is highlighted in green with Ricketts visible to the northwest



Map 2 Extract of the 1st edition 6-inch OS Map (1881). Approximate location of the development site is highlighted in green with the possible moat highlighted blue

4 Aim

The aim of the archaeological evaluation was to record the extent of any surviving archaeological deposits, and to assess the archaeological potential of the site to allow the ECCHEA to determine if further investigation is required.

5 Results (Figs 2-3)

Three trial-trenches were laid out across the development site. Trench T1 was 5m long and 1.8m wide, trench T2 was 19m long and 1.8m wide, and trench T3 was 10m long and 1.8m wide. The latter two trenches were arranged in a cross-shape, and were positioned slightly differently from the trench plan proposed in the WSI due to the presence of trees.

The trenches were cut through modern topsoil (L1, 0.13-0.26m thick, firm, moist dark grey/black/brown sandy-silty-loam) and subsoil (L2, 0.07-0.24m thick, firm, moist medium

grey/brown clayey-sandy-silt with 1% stones) onto natural (L3, firm, moist medium brown silty-clay, encountered at a depth of 0.25-0.49m below current ground level). A sondage was excavated in trench T1 to confirm the identification of L3 as natural.

No archaeological features or material were encountered.



Photograph 1 T2 trench shot – looking southwest

6 Finds

There were no finds.

7 Conclusion

Despite lying in an archaeologically-sensitive area, no archaeological remains were encountered.

8 Acknowledgements

CAT thanks Debden Barns for commissioning and funding the work. The project was managed by C Lister, A Wightman and L Pooley, and fieldwork was carried out by H Furniss with Z Eksen and T Lawrence. Figures are by C Lister, H Furniss, and E Holloway. The project was monitored for ECCPS by Katie Lee-Smith.

9 References

Note: all CAT reports, except for DBAs, are available online in PDF format at <http://cat.essex.ac.uk>

- | | | |
|--------------------------|-------|--|
| Brown, N & Glazebrook, J | 2000 | <i>Research and Archaeology: A Framework for the Eastern Counties 2. Research agenda and strategy.</i> East Anglian Archaeology Occasional Paper 8 (EAA 8) |
| CAT | 2022 | <i>Health & Safety Policy</i> |
| CifA | 2014a | <i>Standard and Guidance for archaeological evaluation.</i> Revised October 2020 |
| CifA | 2014b | <i>Standard and guidance for the collection, documentation, conservation and research of archaeological materials.</i> Revised October 2020 |
| CifA | 2014c | <i>Code of Conduct.</i> Revised October 2021 |
| ECCPS | 2022 | <i>Brief for trial trenching and excavation At Land Rear of Debden Barns, Elder</i> |

Gurney, D	2003	<i>Street, Wimbish</i> , by R Havis <i>Standards for field archaeology in the East of England</i> . East Anglian Archaeology Occasional Papers 14 (EAA 14)
Historic England	2015	<i>Management of Research Projects in the Historic Environment (MoRPHE)</i>
Medlycott, M	2011	<i>Research and archaeology revisited: A revised framework for the East of England</i> . East Anglian Archaeology Occasional Papers 24 (EAA 24)
MHCLG	2021	<i>National Planning Policy Framework</i> . Ministry of Housing, Communities and Local Government

10 Abbreviations and glossary

CAT	Colchester Archaeological Trust
ClfA	Chartered Institute for Archaeologists
context	a single unit of excavation, which is often referred to numerically, and can be any feature, layer or find.
ECC	Essex County Council
ECCHEA	Essex County Council Historic Environment Advisor
ECCPS	Essex County Council Place Services
EHHER	Essex Historic Environment Record
feature (F)	an identifiable thing like a pit, a wall, a drain: can contain 'contexts'
layer (L)	distinct or distinguishable deposit (layer) of material
medieval	period from AD 1066 to c 1500
modern	period from c AD 1800 to the present
natural	geological deposit undisturbed by human activity
NGR	National Grid Reference
OASIS	Online Access to the Index of Archaeological Investigations, http://oasis.ac.uk/pages/wiki/Main
section	(abbreviation sx or Sx) vertical slice through feature/s or layer/s
WSI	written scheme of investigation

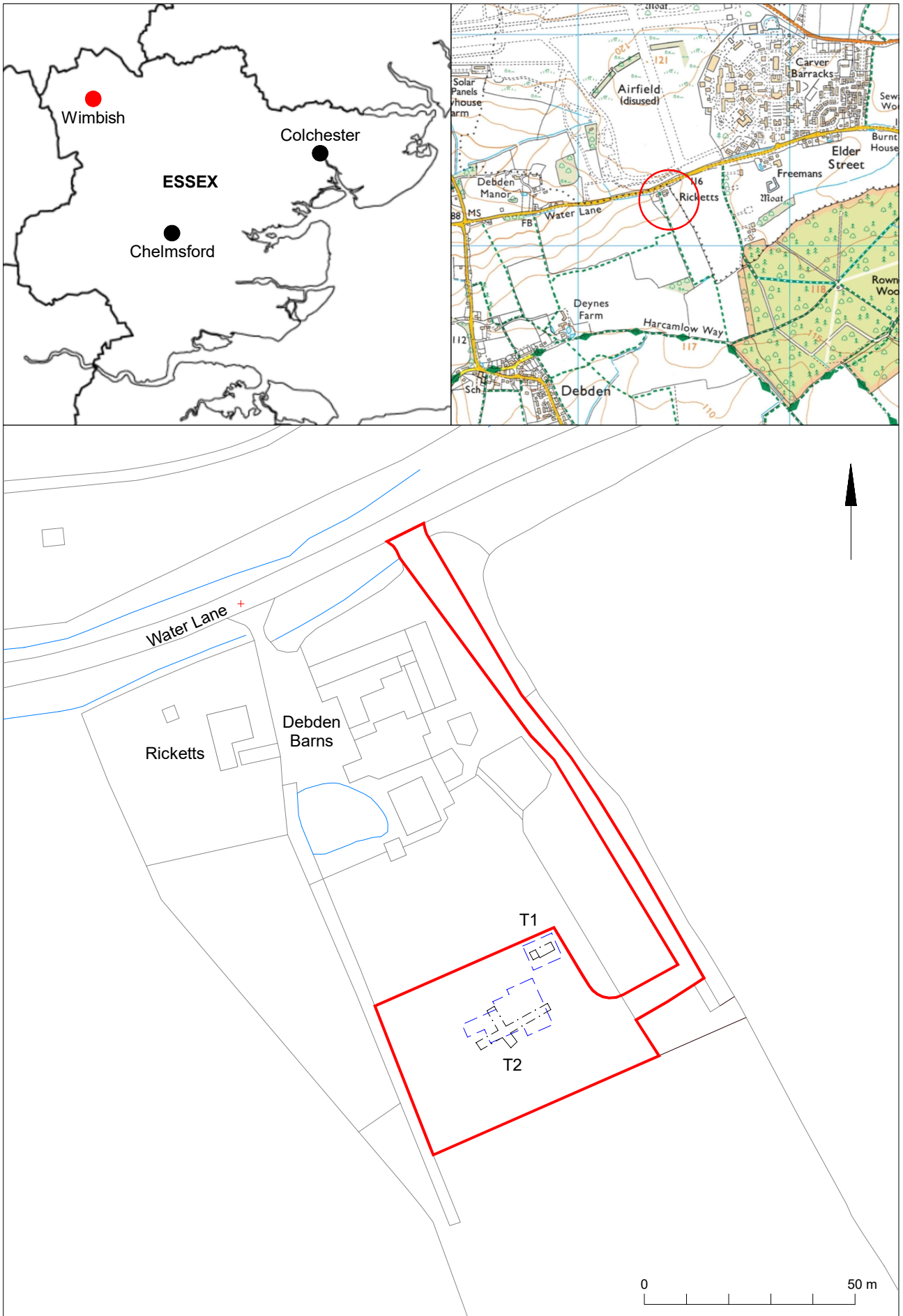
11 Archive deposition

This project falls within the ClfA definition of a sterile project (<https://www.archaeologists.net/selection-toolkit/sterile-projects>), and as such the preserved archaeological archive will take the form of a single digital document that incorporates all the relevant elements from the project archive. This document will be uploaded to OASIS and released into the Archaeological Data Service (ADS) library, from where it will be curated by the ADS. The single digital document will include the report, brief, WSI, photographs, and original site data (for example context sheets, section drawings).

© Colchester Archaeological Trust 2022

Distribution list:

Robert Tetlow (Debden Barns)
Historic Environment Advisor, Essex County Council Place Services
Essex Historic Environment Record, Essex County Council



© Crown copyright. All rights reserved. Licence number 100039294.

Fig 1 Site location and trench layout in relation to proposed development (dashed blue lines).

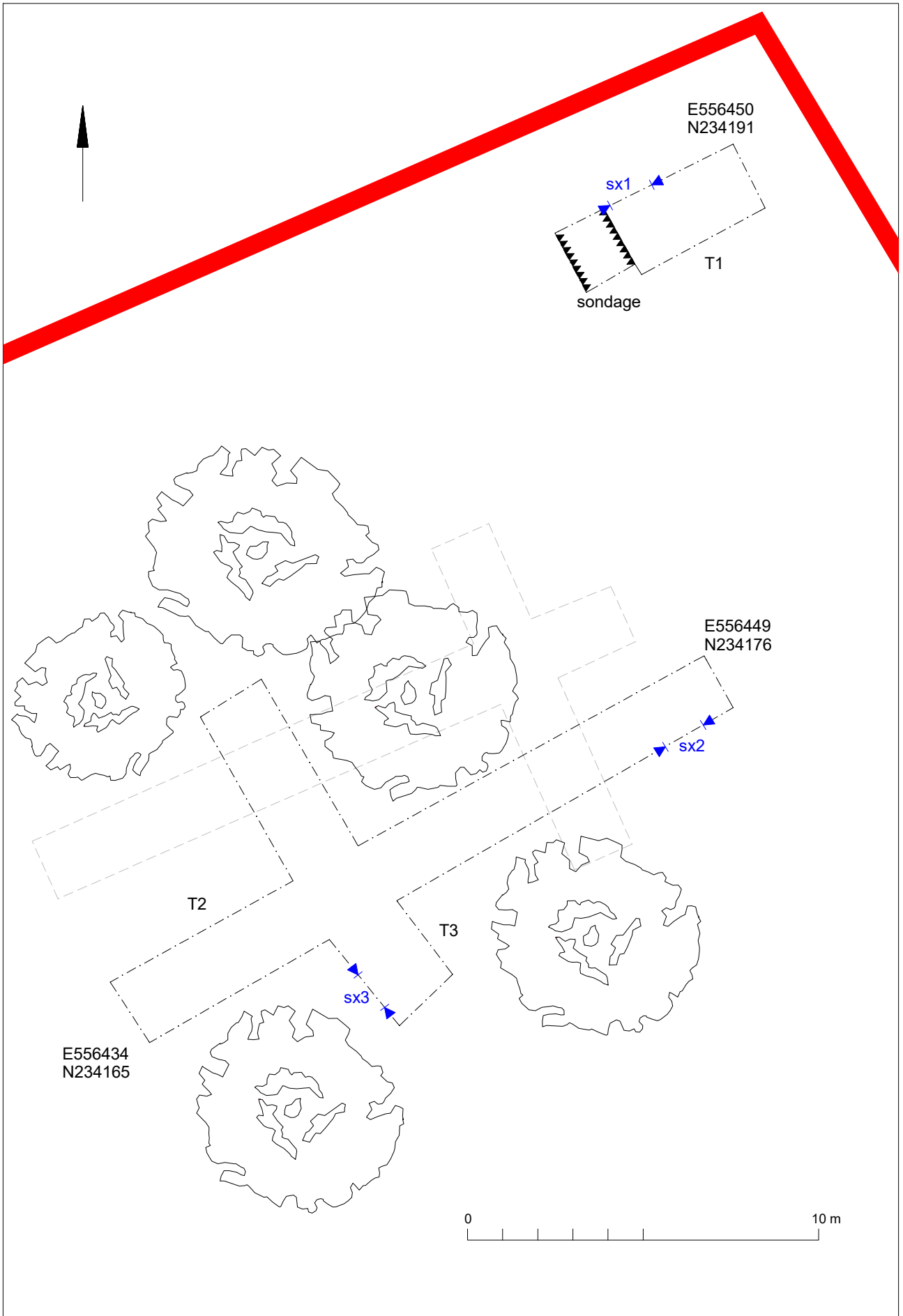


Fig 2 Results

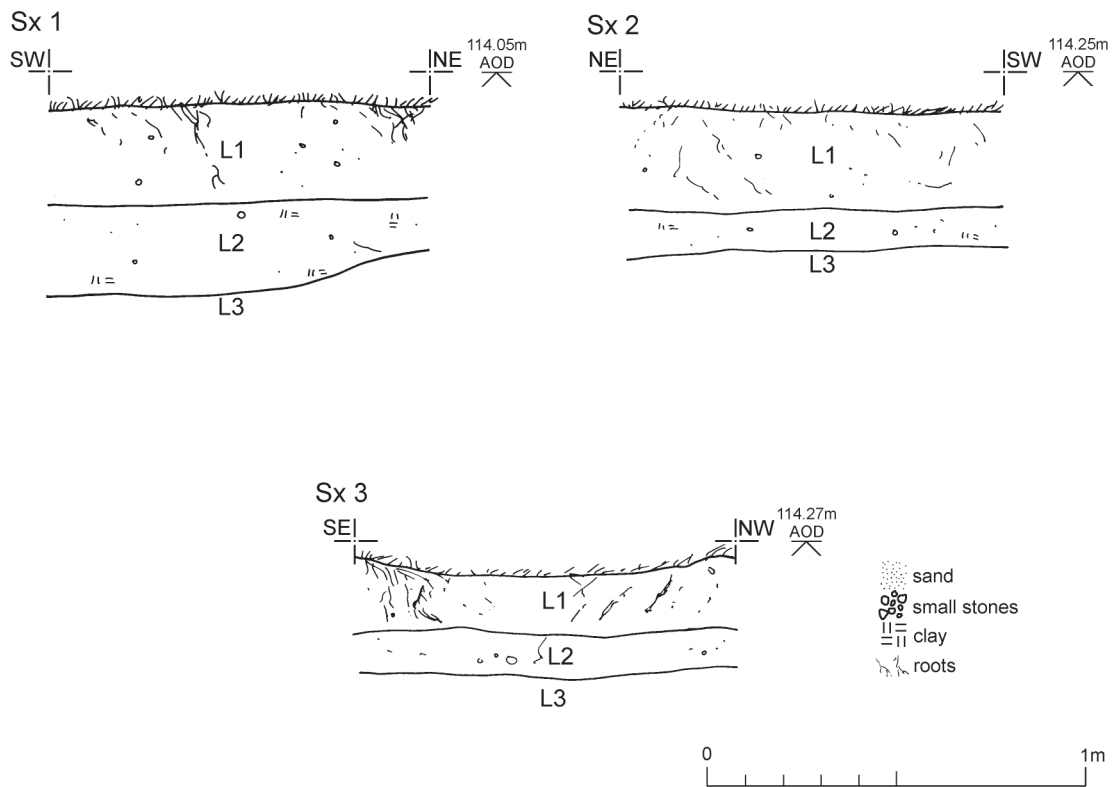


Fig 3 Representative sections.

Summary for colchest3-509664

OASIS ID (UID)	colchest3-509664
Project Name	Evaluation at Land rear of Debden Barns, Water Lane, Elder Streetm Wimbish, Essex
Sitename	Land rear of Debden Barns, Water Lane, Elder Streetm Wimbish, Essex
Activity type	Evaluation
Project Identifier(s)	2022/09f
Planning Id	UTT/20/0217/OP
Reason For Investigation	Planning: Post determination
Organisation Responsible for work	Colchester Archaeological Trust
Project Dates	24-Oct-2022 - 24-Oct-2022
Location	Land rear of Debden Barns, Water Lane, Elder Streetm Wimbish, Essex NGR : TL 56440 34169 LL : 51.9839552664806, 0.276640309497515 12 Fig : 556440,234169
Administrative Areas	Country : England County : Essex District : Uttlesford Parish : Debden
Project Methodology	Evaluation was carried out as per the brief and the WSI.
Project Results	An archaeological evaluation (three trial-trenches) was carried out on land to the rear of Debden Barns, Wimbish, Essex in advance of the construction of a new dwelling. The development site is located next to a property containing a possible moat which likely has its origins in the medieval period, and lies near a historic RAF airfield and in the midst of a number of Second World War era defensive structures. Despite lying in an archaeologically-sensitive area, however, no archaeological remains were encountered.
Keywords	
Funder	
HER	Essex HER - unRev - STANDARD
Person Responsible for work	E, Hicks
HER Identifiers	HER Event No - DBWIM22
Archives	Digital Archive - to be deposited with Archaeology Data Service Archive; Digital Archive - to be deposited with Saffron Walden Museum;