

Colchester Archaeological Trust



**CAT Report 2086
issued September 2024**

**Archaeological monitoring and recording at
7 Church Street, Tollesbury, Essex, CM9 8QJ:
August 2024**



**CAT project ref.: 2024/06f
ECC code: EEX60041**

**Archaeological monitoring and recording at
7 Church Street, Tollesbury, Essex, CM9 8QJ:
August 2024**

NGR: TL 95641 10411 (centre)

**Planning district: Maldon
Planning ref.: MAL/24/00247**

**CAT project ref.: 2024/06f
CAT Report 2086**

**ECC code: EEX60041
OASIS id: colchest3-526874**

Report prepared by Laura Pooley

Fieldwork by Ziya Eksen

**Commissioned by James Lewis, Sol Architecture
On behalf of the homeowner**

Prepared by:	Laura Pooley	Post-Excavation Manager
Reviewed and approved by:	Howard Brooks	Senior Associate
Issued:	03/09/2024	

Colchester Archaeological Trust

Roman Circus House,
Roman Circus Walk,
Colchester,
Essex CO2 7GZ

tel.: 01206 501785

email: services@catuk.org

web: www.catuk.org

Contents

1	Summary	1
2	Introduction	1
3	Archaeological background	1
4	Aims	2
5	Results	2
6	Finds	4
7	Conclusion	4
8	Acknowledgements	5
9	References	5
10	Abbreviations and glossary	5
12	Contents of archive	6
13	Archive deposition	6

Appendix 1	Context list	7
------------	--------------	---

Figures	after p7
---------	----------

OASIS Data Collection Form

List of photographs and figures

Cover: Stripped footprint of the swimming pool, looking west.

Photograph 1	Pit F2, looking east (ignore the north arrow).	2
Photograph 2	Pit F3, looking east (ignore the north arrow).	3
Photograph 3	Pits F1-F4, looking east.	3
Photograph 4	Stripped footprint of the swimming pool, looking east.	4

Fig 1	Site location.
Fig 2	Results.
Fig 3	Representative section.

1 Summary

Archaeological monitoring was carried out at 7 Church Street, Tollesbury, Essex during groundworks for the construction of a swimming pool. Located in the garden of the 17th-century grade II listed timber-framed cottage, groundworks revealed four rubbish pits producing 19th-/20th-century material.

2 Introduction (Fig 1)

This is the report for archaeological monitoring and recording at 7 Church Street, Tollesbury, Essex which was carried out on 20th-21st August 2024. The work was commissioned by James Lewis of Sol Architecture on behalf of the homeowner, and was carried out by Colchester Archaeological Trust (CAT) during groundworks for the construction of a swimming pool and pool house.

As the site lies within an area highlighted by the EHER as having a high potential for archaeological deposits, an archaeological condition was recommended by Essex County Council Place Services (ECCPS). This recommendation was for archaeological monitoring and was based on the guidance given in the *National Planning Policy Framework* (MHCLG 2023).

All archaeological work was carried out in accordance with a *Brief for monitoring at 7 Church Street, Tollesbury* written by Maria Medlycott (ECCPS 2024), and a written scheme of investigation (WSI) prepared by CAT in response to the brief and agreed with ECCPS (CAT 2024a).

In addition to the project Brief and WSI, all fieldwork and reporting was undertaken in accordance with:

- *Management of Research Projects in the Historic Environment (MoRPHE)* (Historic England 2015),
- Professional standards of the Chartered Institute for Archaeologists, including its *Code of Conduct* (ClfA 2020a-b, 2022, 2023a-b),
- East of England standards and frameworks published by East Anglian Archaeology (Brown & Glazebrook 2000, Gurney 2003, Medlycott 2011) and the recent review updates on <https://researchframeworks.org/eoe/>
- Relevant health and safety guidelines and requirements (CAT 2024b).

3 Archaeological and geological background

The following archaeological background draws on the archaeological Brief, Colchester Archaeological Trust report archive and the Essex Historic Environment Record (EHER) accessible via the Heritage Gateway website (www.heritagegateway.org.uk).

The development site is in an area of archaeological interest. No. 7 Church Street, Tollesbury is a grade II listed timber-framed cottage dated to c 1600 with 18th-century extensions (NHLE 1328623), although it is probable that it is located on the site of a medieval predecessor. The site is also 28m north of St Marys Church, a grade II listed building (EHER 11474-7; NHLE 1328624), of early medieval date with possible Saxon origins. Other listed buildings in the vicinity including the 13th-century Tollesbury Hall (EHER 39130), the 16th- /17th-century timber-framed house of Bohus Hall, and the 18th-century Glebe House (EHER 39131) and 10 Church Street (EHER 39136).

Tollesbury is a large fishing village located on a small peninsula at the mouth of the River Blackwater, c 9 miles north-east of Maldon. There is evidence of human activity in the Tollesbury area dating back to the prehistoric period, but the village seen today is based on the medieval settlement. The name derives from a large Saxon estate belonging to 'Toll', which included Tollesbury and the Tolleshunt villages (ECC 2005, 6). The medieval village was centred on the market place (EHER 45657) with the Church of St Mary on its southern edge.

For more information about the local area see the *Maldon District Historic Characterisation Project* (ECC 2008).

The Geology of Britain viewer (1:50,000 scale¹) shows the bedrock geology of the site is comprised of The London Clay mainly comprises bioturbated or poorly laminated, blue-grey or grey-brown, slightly calcareous, silty to very silty clay, clayey silt and sometimes silt, with some layers of sandy clay. The superficial deposits comprises of Glaciofluvial deposits, deposited by meltwater streams. Includes mostly coarse-grained sediments (i.e. sand and gravel) with some finer-grained layers (i.e. clay and silt). Sand and gravel, locally with lenses of silt, clay or organic material.

4 Aim

The aim of the archaeological monitoring was to identify, excavate and record any archaeological contexts revealed during the works.

5 Results (Figs 2-3)

An area measuring 76.2m² was machine-excavated under the supervision of a CAT archaeologist. It was reduced to a depth of between 0.65m (to west) and 1.0m (to east) through topsoil (L1, c 0.12-0.22m thick) and two layers of made-ground (L2, c 0.30m thick; L3, c 0.23-0.48m thick) into natural (L4). Cut into natural were four modern pits (F1-F4) each containing a substantial quantity of 19th- and 20th-century material including pottery, glass, brick/tile and iron wire with F2 also containing a lot of cockle shell. None of these pits were excavated.

The area of the pool house and patio was reduced to a depth of c 0.15m below current ground level through L1 and into L2.



Photograph 1 Pit F2, looking east (ignore the north arrow).

¹ British Geological Survey – <https://geologyviewer.bgs.ac.uk/>



Photograph 2 Pit F3, looking east (ignore the north arrow).



Photograph 3 Pits F1-F4, looking east.



Photograph 4 Stripped footprint of the swimming pool, looking east.

6 Finds

The only finds retained for dating were a complete stoneware bottle and a glass bottle from pit F3.

6.1 Stoneware bottle

by Dr Matthew Loughton

A complete 19th-century English stoneware (fabric F45M) ginger-beer bottle from Denby in Yorkshire with stamps of MARKHAM and MALDON on the neck/shoulder and BOURNE 12 DENBY in a circular cartouche towards the base.

6.2 Glass bottle

by Laura Pooley

A complete glass bottle that held a powder for making up fruit juice drinks. The bottle is small, sub-square and of blue/green glass. It is embossed EIFFEL TOWER / FRUIT JUICES on one side, and G.FOSTER CLARK & Co / MAIDSTONE on the opposing side. Probably dating from the late 1890s when the embossed image of the Eiffel Tower disappeared to 1910 when Foster Clark's became a limited company and were embossed with Ltd rather than Co (accessed 30/08/24: <https://www.whatthevictorianshrewaway.com/project/foster-clarks-bottles/>).

7 Conclusion

Archaeological monitoring at 7 Church Street, Tollesbury revealed four modern pits, with at least three containing a sizeable dump of 19th- and 20th-century rubbish which presumably originated from the occupants of the property.

8 Acknowledgements

CAT thanks Sol Architecture and the homeowner for commissioning and funding the work. The project was managed by A Wightman and C Lister, fieldwork was carried out by Z Eksen. Figures are by Z Eksen and E Holloway. The project was monitored for ECCPS by Maria Medleycott.

9 References

Note: all CAT reports, except for DBAs, are available online in PDF format at <http://cat.essex.ac.uk>

Brown, N & Glazebrook, J	2000	<i>Research and Archaeology: A Framework for the Eastern Counties 2. Research agenda and strategy.</i> East Anglian Archaeology Occasional Paper 8 (EAA 8).
CAT	2024a	<i>Written Scheme of Investigation for archaeological monitoring and recording at 7 Church Street, Tollesbury, Essex</i> , by Chloé Hill. Colchester: Colchester Archaeological Trust.
CAT	2024b	<i>Health & Safety Policy.</i> Colchester: Colchester Archaeological Trust.
ClfA	2020a	<i>Standard and guidance for the creation, compilation, transfer and deposition of archaeological archives.</i> ClfA Chartered Institute for Archaeologists; published 2014, revised 2020.
ClfA	2020b	<i>Standard and guidance for the collection, documentation, conservation and research of archaeological materials.</i> ClfA Chartered Institute for Archaeologists; published 2014, revised 2020.
ClfA	2022	<i>Code of Conduct.</i> ClfA Chartered Institute for Archaeologists; published 2014, revised 2022.
ClfA	2023a	<i>Standard for archaeological monitoring and recording.</i> ClfA Chartered Institute for Archaeologists.
ClfA	2023b	<i>Universal guidance for archaeological monitoring and recording.</i> ClfA Chartered Institute for Archaeologists.
ECCPS	2024	<i>Brief for monitoring at 7 Church Street, Tollesbury</i> , by Maria Medleycott. Essex: Essex County Council Place Services.
Gurney, D	2003	<i>Standards for field archaeology in the East of England.</i> East Anglian Archaeology Occasional Papers 14 (EAA 14).
Historic England	2015	<i>Management of Research Projects in the Historic Environment (MoRPHE).</i>
Medleycott, M	2011	<i>Research and archaeology revisited: A revised framework for the East of England.</i> East Anglian Archaeology Occasional Papers 24 (EAA 24).
MHCLG	2023	<i>National Planning Policy Framework.</i> Ministry of Housing, Communities and Local Government.

10 Abbreviations and glossary

Anglo-Saxon	period from c 500 – 1066
CAT	Colchester Archaeological Trust
ClfA	Chartered Institute for Archaeologists
context	specific location of finds on an archaeological site
ECC	Essex County Council
ECCHEA	Essex County Council Historic Environment Advisor
ECCPS	Essex County Council Place Services
EHHER	Essex Historic Environment Record
feature (F)	an identifiable thing like a pit, a wall, a drain: can contain 'contexts'
layer (L)	distinct or distinguishable deposit (layer) of material
medieval	period from AD 1066 to c 1500
modern	period from c AD 1800 to the present
natural	geological deposit undisturbed by human activity
NGR	National Grid Reference
OASIS	O nline A ccess to the I ndex of A rchaeological I nvestigations, http://oasis.ac.uk/pages/wiki/Main
post-medieval	from c AD 1500 to c 1800
section	(abbreviation sx or Sx) vertical slice through feature/s or layer/s
ws	written scheme of investigation

12 Contents of archive

Finds: to be confirmed after discussion with Colchester Museum

Digital:

CAT Report 2086

ECC evaluation brief, CAT written scheme of investigation

Digital photographs

Site data

Survey data

13 Archive deposition

The archive is currently held by the Colchester Archaeological Trust at Roman Circus House, Roman Circus Walk, Colchester, Essex CO2 7GZ, but will be permanently deposited with Colchester Museum (finds, if retained) and the Archaeology Data Service (digital data).

© Colchester Archaeological Trust 2024

Distribution list:

James Lewis, Sol Architecture

The homeowner

Historic Environment Advisor, Essex County Council Place Services

Essex Historic Environment Record

Appendix 1 Context list

Context	Finds No.	Context type	Description	Date
L1	-	Topsoil	Dark brown silty-sand.	Modern
L2	-	Made-ground	Firm, dry, greyish-brown silty-sand with frequent 19th-/20th-century CBM fragments and other material.	Modern
L3	-	Made-ground	Dark brown/dark greyish-brown silty-sand.	Modern
L3	-	Natural	Sand and gravels.	Post-glacial
F1	-	Pit	4.8m by >3.6m	Modern
F2	-	Pit	1.3m by 0.6m	Modern
F3	-	Pit	1.07m by 0.5m	Modern
F4	-	Pit	1.59m by 0.67m	Modern

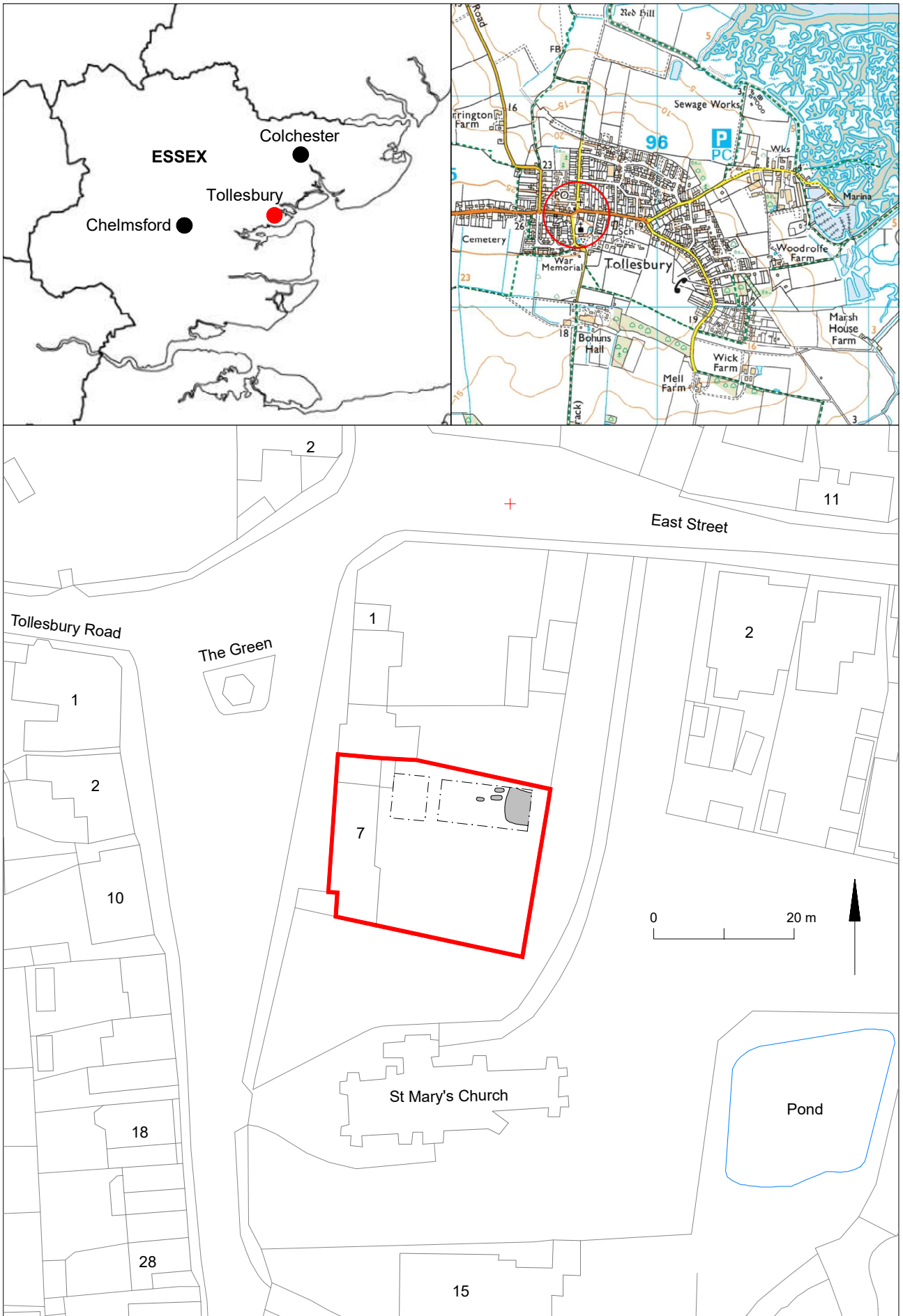


Fig 1 Site location.

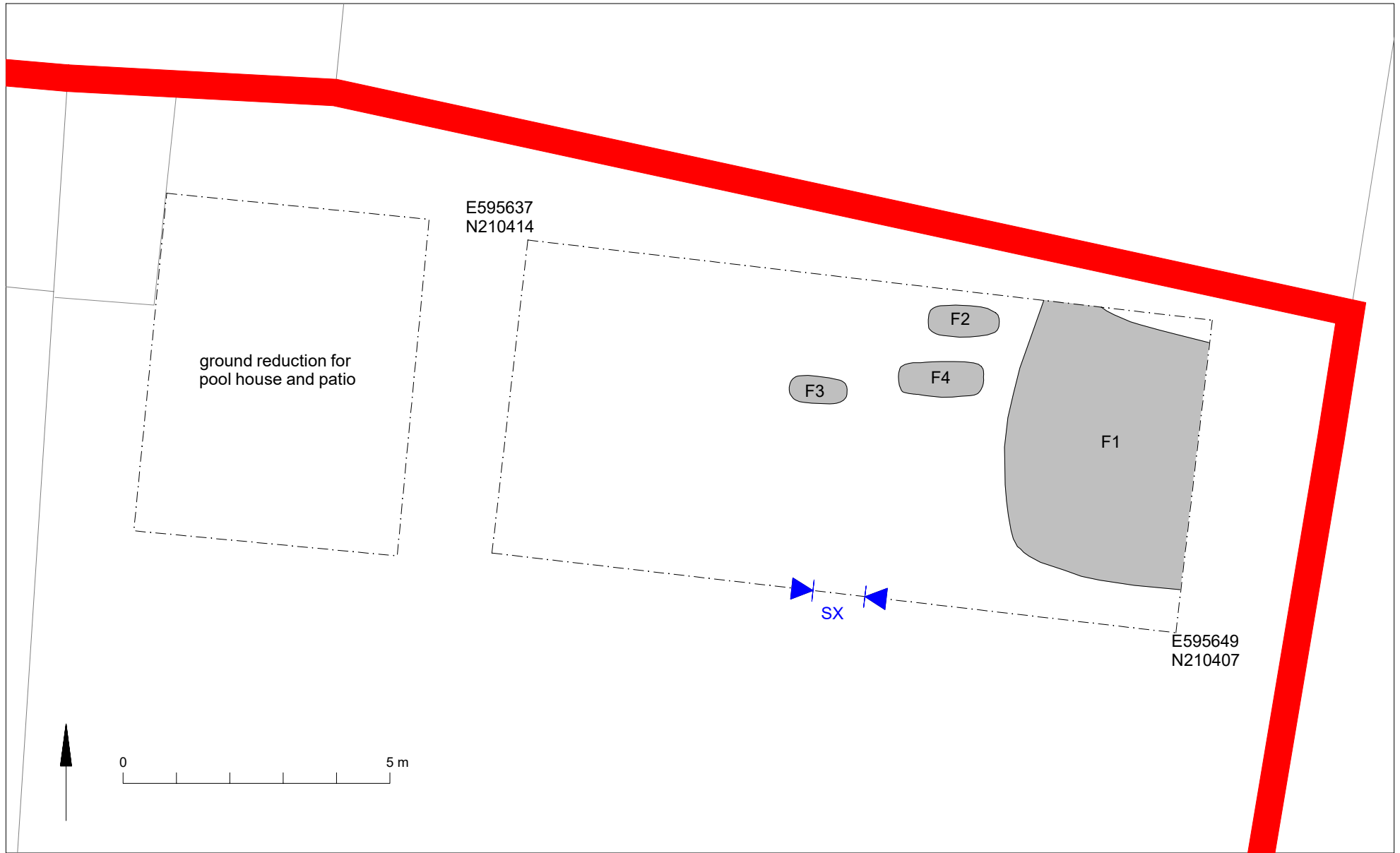


Fig 2 Results

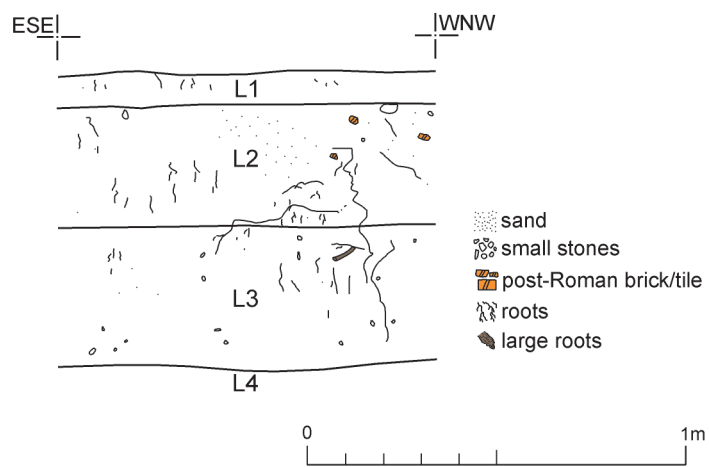


Fig 3 Representative section.

OASIS Summary for colchest3-526874

OASIS ID (UID)	colchest3-526874
Project Name	Archaeological monitoring and recording at 7 Church Street, Tollesbury, Maldon, Essex, CM9 8QJ: August 2024
Sitename	7 Church Street, Tollesbury, Maldon, Essex, CM9 8QJ
Sitecode	EEX60041
Project Identifier(s)	2024/06f
Activity type	Watching Brief
Planning Id	MAL/24/00247
Reason For Investigation	Planning requirement
Organisation Responsible for work	Colchester Archaeological Trust
Project Dates	20-Aug-2024 - 21-Aug-2024
Location	7 Church Street, Tollesbury, Maldon, Essex, CM9 8QJ NGR : TL 95645 10406 LL : 51.758158, 0.8334 12 Fig : 595645,210406
Administrative Areas	Country : England County/Local Authority : Essex Local Authority District : Maldon Parish : Tollesbury
Project Methodology	Archaeological monitoring and recording of all groundworks as specified in the project brief and wsi.
Project Results	Archaeological monitoring was carried out at 7 Church Street, Tollesbury, Essex during groundworks for the construction of a swimming pool. Located in the garden of the 17th-century grade II listed timber-framed cottage, groundworks revealed four rubbish pits producing 19th-/20th-century material.
Keywords	Rubbish Pit - 20TH CENTURY - FISH Thesaurus of Monument Types
Funder	Private individual
HER	Essex HER - unRev - STANDARD
Person Responsible for work	Adam Wightman, Chris Lister
HER Identifiers	HER Event No - EEX60041
Archives	Digital Archive - to be deposited with Archaeology Data Service Archive;